

Emergency Aid Camp Infrastructure



Fuel Bladder Tanks

Our fuel bladder (or pillow) tanks have been developed especially for the harsh emergency aid environment, and are supplied with special outlets, valves and vents to suit use with diesel, Jet fuel and other liquid chemicals**

The tanks can be unrolled and used on any area of flat ground that has been cleared of debris.

- Suitable for ALL climates
- Installed by 2 people in around 15 minutes
- Fast deployed storage for local fuels
- All tanks supplied packed in an ISPM15 heat treated plywood case suitable for export
- Includes all necessary tools, instruction manual and repair kit
- All tanks can be supplied as kits with low voltage electric fuel transfer pumps, flow meters and pipework
- Special sizes and outlet configurations made to order



Reinforced corner mouldings and integral tie down holes



2" BSP outlet and plug



Flow meter and fuel transfer pump

Bund Liners

Bund liners are produced in fully fuel resistant materials to act as secondary containment linings. Bund liners are supplied large enough to line a bund to the height of the filled bladder.



** Please refer to our Chemical resistance charts when considering suitability of these bladders for specific fuels / chemicals



Butyl Products Ltd.

Lingfield House, 11 Radford Crescent, Billericay, Essex,
CM12 0DW, United Kingdom.

T: +44 (0) 1277 653 281

E: enquiries@butylproducts.co.uk

W: butylproducts.co.uk

Emergency Aid Camp Infrastructure



Technical Data

Bladder Construction

All bladders are supplied with reinforced corner mouldings and with integral tie-down holes.

Bladder Fittings

One 2.5" BSP(F) Outlet is fitted to the top centre of the bladder, this is fitted with a mushroom vent or flame tube when filling, or a plug for long term storage.

Two 2" BSP(F) Outlets are fitted to one side of the bladder, one is fitted with a plug and the other is fitted with a 2" V50 butterfly valve giving a 2" BSP(F) outlet.

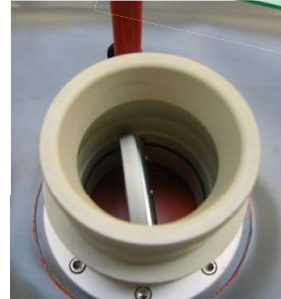
Larger bladders (60,000 litre +) are fitted with two 4" Top caps with covers.

Groundsheets

Produced approximately 1m larger than the bladder tank dimensions when empty. All groundsheet are fitted with moulded-in edge eyelets for pegging down if required.

Bladder Material

- Material thickness: 1.30 ± 0.1mm
- Material weight: 1.27 ± 0.1kg/m²
- Coating: PUR 0.4mm
- Base cloth: 940 Dtex 1 ply polyamide
- Tear strength: >80N
- Elongation at break: Warp 15%, Weft 20%
- Tensile strength at break: 3500 N/5cm
- Adhesion: >250 N/5cm
- Temperature resistance: -32C to +90C
- Puncture: >125N



2" outlet with V50 butterfly valve



Mushroom vent

Capacity (litres)	Tank Layflat size (m)	Tank size filled (m)	Groundsheet size (m)	Tank weight (unpacked, empty)
1,000	2.10 x 1.80	1.60 x 1.30 x 0.50	3.10 x 3.00	20kg
2,000	3.40 x 1.80	2.80 x 1.20 x 0.60	4.40 x 3.00	27kg
3,000	4.80 x 1.80	4.20 x 1.20 x 0.60	5.80 x 3.00	35kg
5,000	3.90 x 3.00	3.20 x 2.30 x 0.70	4.90 x 4.00	42kg
10,000	4.40 x 4.00	3.40 x 3.00 x 1.00	5.40 x 5.00	60kg
15,000	4.70 x 5.00	3.60 x 3.90 x 1.10	5.70 x 6.00	76kg
20,000	5.70 x 5.00	4.50 x 3.80 x 1.20	6.70 x 6.00	89kg
30,000	6.30 x 6.00	5.00 x 4.70 x 1.30	7.30 x 7.00	116kg
40,000	6.80 x 7.00	5.50 x 5.70 x 1.30	7.80 x 8.00	142kg
50,000	6.70 x 8.00	5.20 x 6.50 x 1.50	8.00 x 9.00	158kg
60,000	7.70 x 8.00	6.20 x 6.50 x 1.50	8.70 x 9.00	180kg
75,000	8.20 x 9.00	6.70 x 7.50 x 1.50	9.20 x 10.00	213kg
100,000	10.50 x 9.00	9.00 x 7.50 x 1.50	11.50 x 10.00	271kg



Butyl Products Ltd.

Lingfield House, 11 Radford Crescent, Billericay, Essex,
CM12 0DW, United Kingdom.

T: +44 (0) 1277 653 281

E: enquiries@butylproducts.co.uk

W: butylproducts.co.uk